



THE WESTIN

MAUI
RESORT & SPA
KĀ'ANAPALI

THE WESTIN MAUI
RESORT & SPA, KĀ'ANAPALI
2365 Kā'anapali Parkway
Lahaina, HI 96761
808.667.2525
www.westinmaui.com

©2021 Marriott International, Inc. All Rights Reserved.
All names, marks and logos are the trademarks of
Marriott International, Inc., or its affiliates.



Welcome to The Westin Maui Resort & Spa, Kā'anapali

The water of Maui holds an intangible allure for those seeking the island's revitalizing energy. Check your bags, head to the beach and let the natural beauty and aloha spirit wash over you. But first, we would like to reveal some of the exciting transformations, including our redesigned lobby and entry, reimagined pools and gardens, and the enhanced deluxe guestrooms and suites of Hōkūpa'a Tower.

We have assembled this information to inspire exploration and ensure you get the most out of your time in Kā'anapali. Seize the day from sunrise with a dawn run along the beach paths, spin classes, or beach yoga on the lawn overlooking the inviting blue waters of the Pacific.

We hope you enjoy a replenishing escape that makes you feel your best.

HIGHLIGHTS

- Newly reinvented porte-cochère and Hōkūpa'a Tower
- New 87,000 square foot aquatic oasis
- Traditional cultural amenities and celebrations
- Activities to enhance your well-being
- Renovated spa
- Snorkeling, fishing, yachting charters

LOCATION

The Westin Maui Resort & Spa, Kā'anapali is located on the scenic Kā'anapali Beach in Lahaina, Maui.

ACCOMMODATIONS

770 rooms, including 28 suites

RESTAURANTS & LOUNGES

From poolside fare to relaxed dining, our cuisine is always fresh and always island-inspired. Make sure to visit our Waiale Polynesian Lū'au at sunset, as well as our various eateries throughout the resort.

AMENITIES

- Newly redesigned aquatic playground with six pools and two slides
- Free shuttle to Lahaina Town and Sheraton/Westin Resorts in Kā'anapali
- Specialty boutiques and dining at neighboring Whalers Village
- Adults-only pool on Kā'anapali Beach
- In-room high-speed internet access
- Wi-Fi in public areas
- Check-in: 4PM / Check out: 11AM
- Children 17 and under sharing same room as parents/guardian - no additional charges
- Heavenly® Beds, Heavenly® Cribs and Heavenly® Baths
- Multilingual resort staff
- 24-hour Service Express In-room Dining
- Business Center
- Heavenly Spa by Westin™
- WestinWORKOUT® Fitness Studio
- Mind & Body Studio
- Westin Kids Club with day and evening camps and all-age activities - koi fish feeding, bird meet and greet
- Same-day laundry service
- Electric vehicle charging stations
- SpeediShuttle Airport transportation desk (lobby)
- Concierge Desks



A Rejuvenating Transformation



HŌKŪPAʻA

A journey of self-discovery awaits in our historic Kāʻanapali Beach setting. Our transformation rediscovers this serene sense of place and celebrates the natural beauty that surrounds us. A calming energy flows from the outdoors inside, through the new porte-cochère and green Living Wall past the lobby, over koi ponds and out into cascading pools and gardens, mere steps from the gently crashing waves of the Pacific.

A DESIRABLE DESTINATION

Named after the North Star, the 217-room luxury beach tower, Hōkūpaʻa, represents a new beginning as we introduce spacious deluxe guestrooms with intuitive designs that evoke the calming azure waters and soft sands of the beach below, with inspired touches that elevate your experience throughout your stay.

Families with children and teens will enjoy spacious accommodations featuring two queen beds or a king bed and sleeper sofa with panoramic glass balconies and Heavenly® Beds and spa-like Heavenly® Baths. Hōkūpaʻa guests also receive complimentary access to The Lānai, an exclusive gathering place for light bites, swim-up craft cocktails, and cultural amenities.



HŌKŪPAʻA TOWER AMENITIES:

- Personal guest experience team
- Exclusive access to The Lānai reserved for Hōkūpaʻa guests only
- Artisanal small bites at breakfast served daily
- Exclusive access to infinity edge cocktail pools featuring stunning ocean views
- Priority booking throughout the resort

AN EXCLUSIVE ESCAPE

Rest and rejuvenate in our one-of-a-kind luxury suites. Soak in the unparalleled views of the Pacific Ocean from Hōkūpaʻa Suite-288 featuring a spacious entertaining area, day beds and an expansive rooftop terrace with a private hot tub, lounge, and outdoor dining space. This ultra-exclusive suite can only be booked by calling the property directly and isn't listed anywhere online. For an elevated suite experience, Penthouse Suite-1188 is a 1,400 sq. ft. suite nestled near the edge of Kāʻanapali Beach and features a spacious entertaining and dining area.





A Refreshing Experience



THE LĀNAI

AT HŌKŪPA'A

A TRUE GATHERING PLACE

Hawai'i's architectural innovation in indoor-outdoor lifestyles, a lānai erases the boundary between dwelling and nature, connecting your living space to the living world. The Lānai at The Westin Maui is a rarefied venue reserved just for Hōkūpa'a guests to gather for extraordinary experiences artfully designed to appeal to all senses. Here, genuine cultural creativity takes shape in distinctive, one-of-a-kind offerings of authentic Maui. From farm-fresh chef demonstrations to craft mixology tasting, there's unforgettable memories to be made for every age and interest.

The Lānai enhances Hōkūpa'a guests' stay by putting you in touch with Maui's natural elements, in a spacious, elevated enclave open to the tropical breeze and breathtaking panoramic vistas.

ENRICH YOUR TIME HERE WITH:

- Artisanal seasonal breakfast served daily
- Fresh lei po'o (flower crown) making
- Chase the Sunset ritual unique to our resort
- Beverage tastings with resort mixologist
- Interactive chef demonstrations
- Mo'olelo "talk story" sessions
- Star navigation classes
- 'Ukulele lessons
- Ulana niu (coconut weaving)
- History of Maui Gold with pineapple tasting



A Place That Inspires Activity (or Total Relaxation)

For Native Hawaiians, interacting with water is not just recreational, it's spiritual. When you train your senses to be immersed in vitalizing kai (salt water) and refreshing wai (fresh water), a deeper relationship to these powerful elements surfaces. The Westin Maui inspires with ways to rejuvenate – stroll between lush landscaped tropical gardens and cascading water features to our new aquatic playground inclusive of six pools, a kid's play area, waterfalls, and adults-only pool.

AQUATIC OASIS

Spanning 87,000 sq. ft., the reimagined pool playground is sure to “wow” guests of all ages. Our Kawaiola Pools (living waters) boasts six stunning pools overlooking legendary Kā'anapali Beach. Adults and children now have their own space for wading, swimming and playing. Kids will love the brand-new family pool with its two waterslides, whirlpool and splashing water features, while adults can indulge in well-deserved downtime in an inviting adults-only collection of pools with exclusive lounge seating, plunge pool and whirlpool.



CABANAS

Live the cabana life at our pool oasis and hideout in your own tropical retreat. Scattered across the pool decks, the dew-drop shaped structures made from bamboo and dark wood, evoke images of a time when the beaches of Kā'anapali were lined with long stately blades of pili grass, a native plant of Hawai'i, that gleams like starlight when the morning dew settles on it. Our cabanas provide an intimate and serene setting, and can be reserved through the Towel Desk.

HALE ALI'I

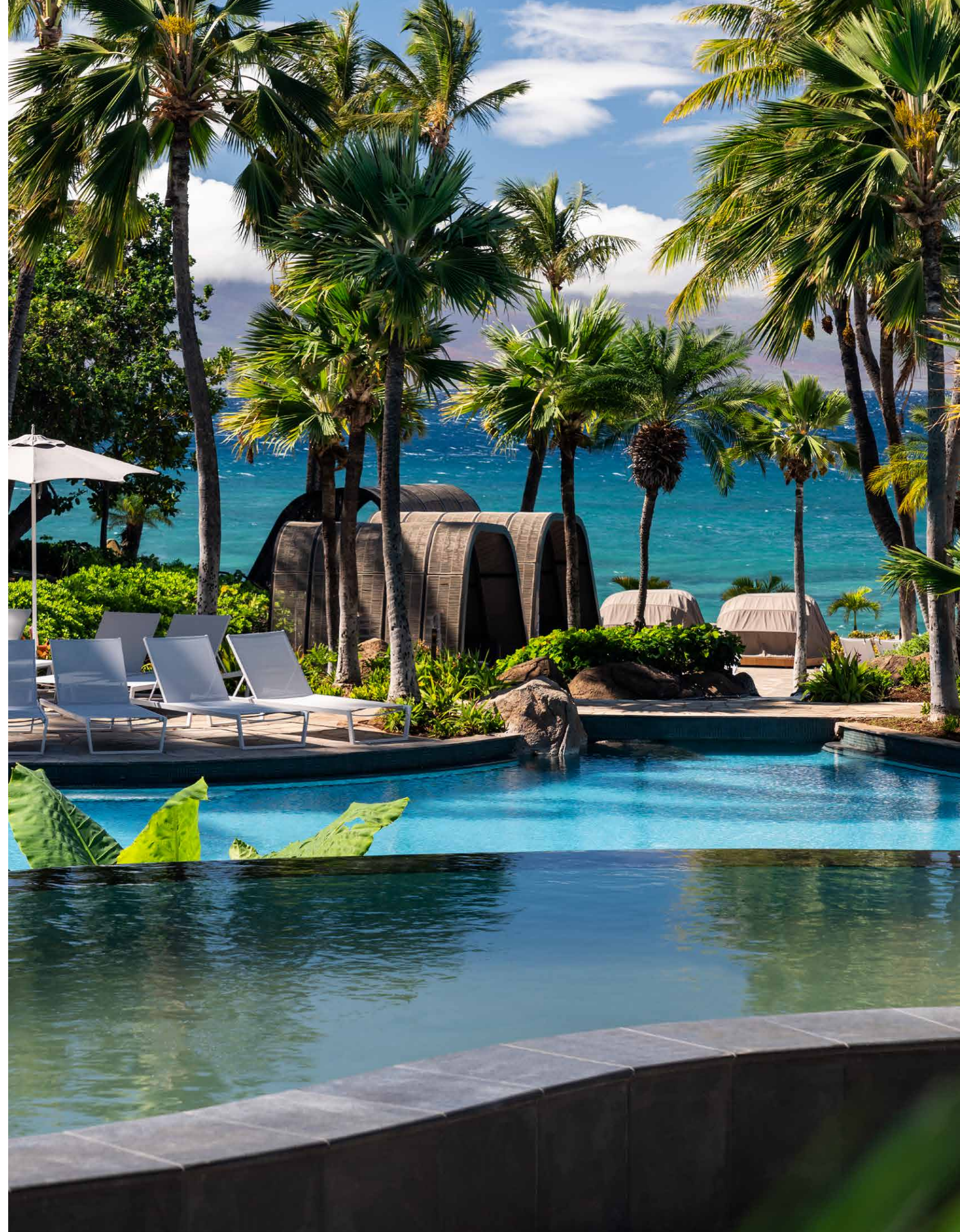
For the ultimate luxury cabana experience, enjoy the Hale Ali'i - the largest covered cabana offered on the pool deck, fronting Kā'anapali Beach. This chic cabana accommodates up to six people and is equipped with a 55" Smart Television, refrigerator, bottled waters and towels.

HALE HO'OMALU

Meaning “peace,” Hale Ho'omaluu is an elegant option to lounge poolside while listening to the palm trees sway to the calming sea breeze. Nestled under a covered awning, Hale Ho'omaluu includes bottled water and towel service for up to two people.

PUNE'E

The Pune'e cabana is a simple and stylish lounging option which includes covered seating for two, bottled water and towel service and can accommodate up to two people.





A New Wellness Haven

HEAVENLY SPA

Absorb pure Maui at the Heavenly Spa by Westin™. Designed to engage our guests across seven senses, our Heavenly Spa touches your five physical senses of sight, sound, touch, taste and scent, as well as the psychological senses of emotion and meaning. A space for silence, separation from technology and personal reflection and contemplation, you'll emerge feeling renewed, energized and focused. Our spa makes use of the islands' natural and revitalizing ingredients, as well as an extensive range of local luxury spa products and cultural techniques.

HEALING FOUND ONLY HERE

Made here on the Hawaiian Islands with locally grown ingredients, our Hualani (heavenly fruit) product line, available nowhere else in the world, includes a blend of tropical botanicals and oils such as coconut, kukui nut and macadamia nut and leaves the skin with a light and refreshing fragrance of pineapple and liliko'i (passionfruit).

TREATMENTS INSPIRED BY MAUI

HEAVENLY SPA SIGNATURE MASSAGE

A massage tailored to your specific needs, enhanced with a warm back compress and our signature Hualani blend of tropical fruit fragrances. Renewal comes from the harmonious balance of aromatherapy and touch. 50 min. / 80 min.

HAWAIIAN LOMILOMI MASSAGE

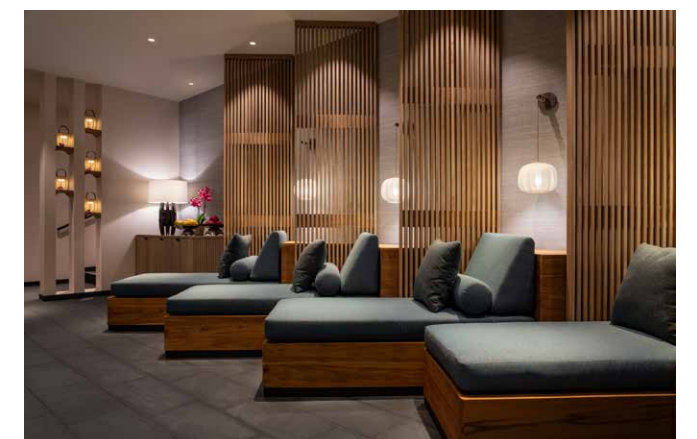
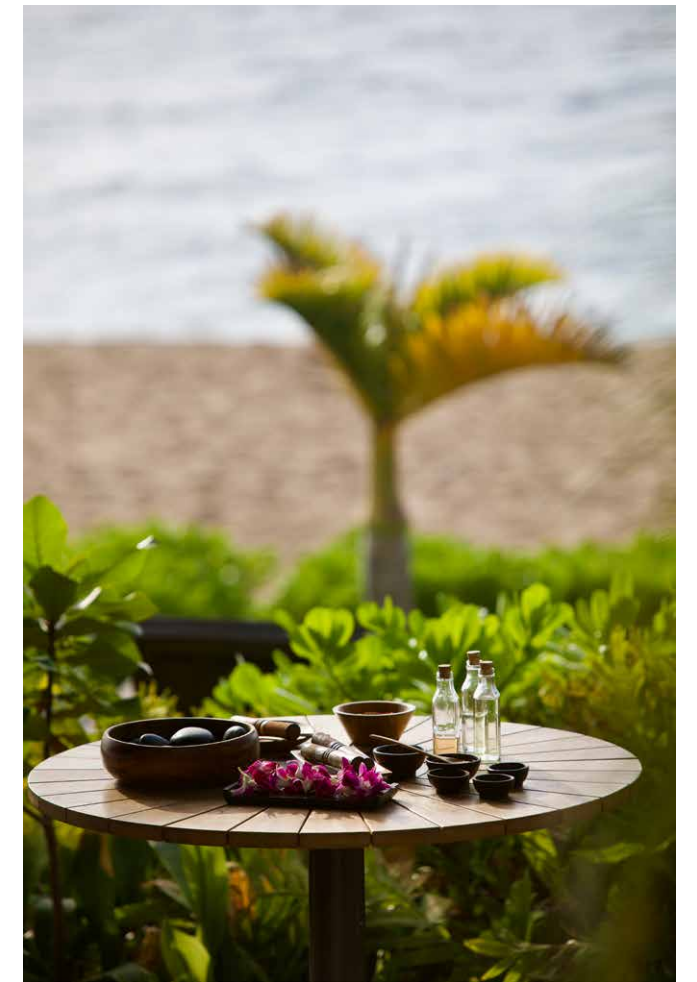
Let your healing Hawaiian journey begin here with an application of our organic oil blend infused with the aromatherapy benefits of lemongrass and ginger to help support detoxification while transporting your mind, body and spirit. 50 min. / 80 min.

HÖKŪPA'A COUPLES RETREAT

This deeply relaxing and renewing experience connects the mind, body and spirit with Hawaiian-style massages using fluid movements and our organic lemongrass ginger massage oil. This unforgettable experience concludes with a calming bath for two while soaking in naturally farmed sea salt from the island of Moloka'i, coconut milk, and Maui grown sugarcane. 80 min. / 110 min.

SPA HIGHLIGHTS:

- Facials & body treatments
- 8 treatment rooms
- Oceanfront outdoor lānai with plunge pool and relaxation area
- Infrared sauna
- Relaxation area
- Indoor couples suite with whirlpool
- Outdoor cabana massage for couples or singles
- Locker rooms



A Place to Connect with Body and Mind

TAKE TO THE WATER

Water is the vital essence of our lives, a resource to be respected and shared. In May 2018, The Resort launched the Westin Maui WATERMAN program, an initiative to inspire and influence others to make a positive and sustainable impact on the ocean. Resort guests can learn about the importance of protecting it and the surrounding lands through beach cleanups and diving headfirst into a range of energizing ocean adventure activities with paddleboarders, boat captains, canoe racers and surfers. Famed local Watermen and Waterwomen include World Champion Surfer and Environmental Aloha Ambassador Zane Kekoa Schweitzer, Maui Pro Surfer Sierra Lerback, Marine Naturalist Dirk Younkerman and Stand-up Paddleboarding pioneer Suzie Cooney.

RUN LIKE A LOCAL

Maintaining your running schedule can be challenging while traveling. To help you stay fit, our RUNWESTIN™ program provides a scenic three mile running map to help you find the best route to explore the surroundings on foot.



WESTINWORKOUT® FITNESS STUDIO

Open 24/7, our fitness studio helps you maintain your routine with state-of-the-art fitness equipment. We also provide fitness services such as daily fitness classes taught by certified instructors, personal training with certified trainers who individualize your workout, and private group and wellness classes.

FITNESS ACTIVITIES:

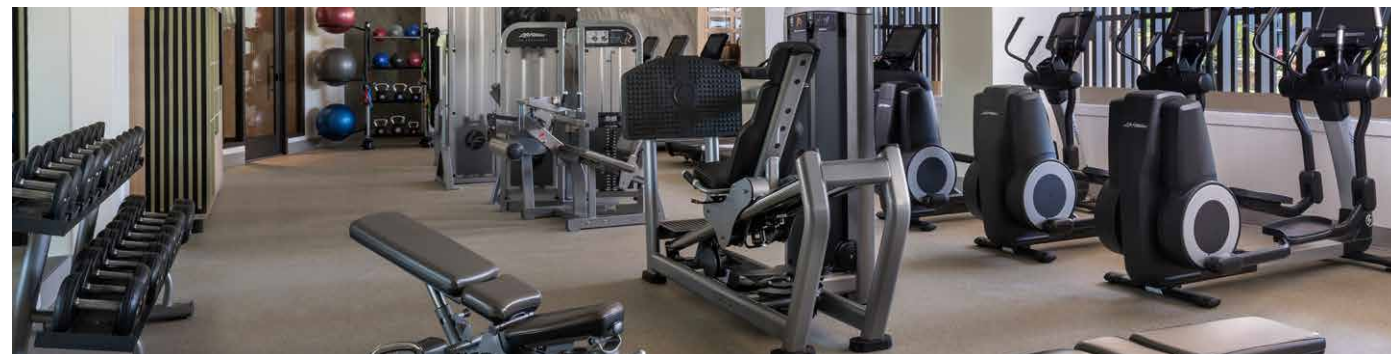
- Biking Trail
- Miniature Golf
- Volleyball
- Bike Rentals
- Sailing
- Surfing
- Hiking Trails
- Snorkeling
- Kayaking
- Tennis

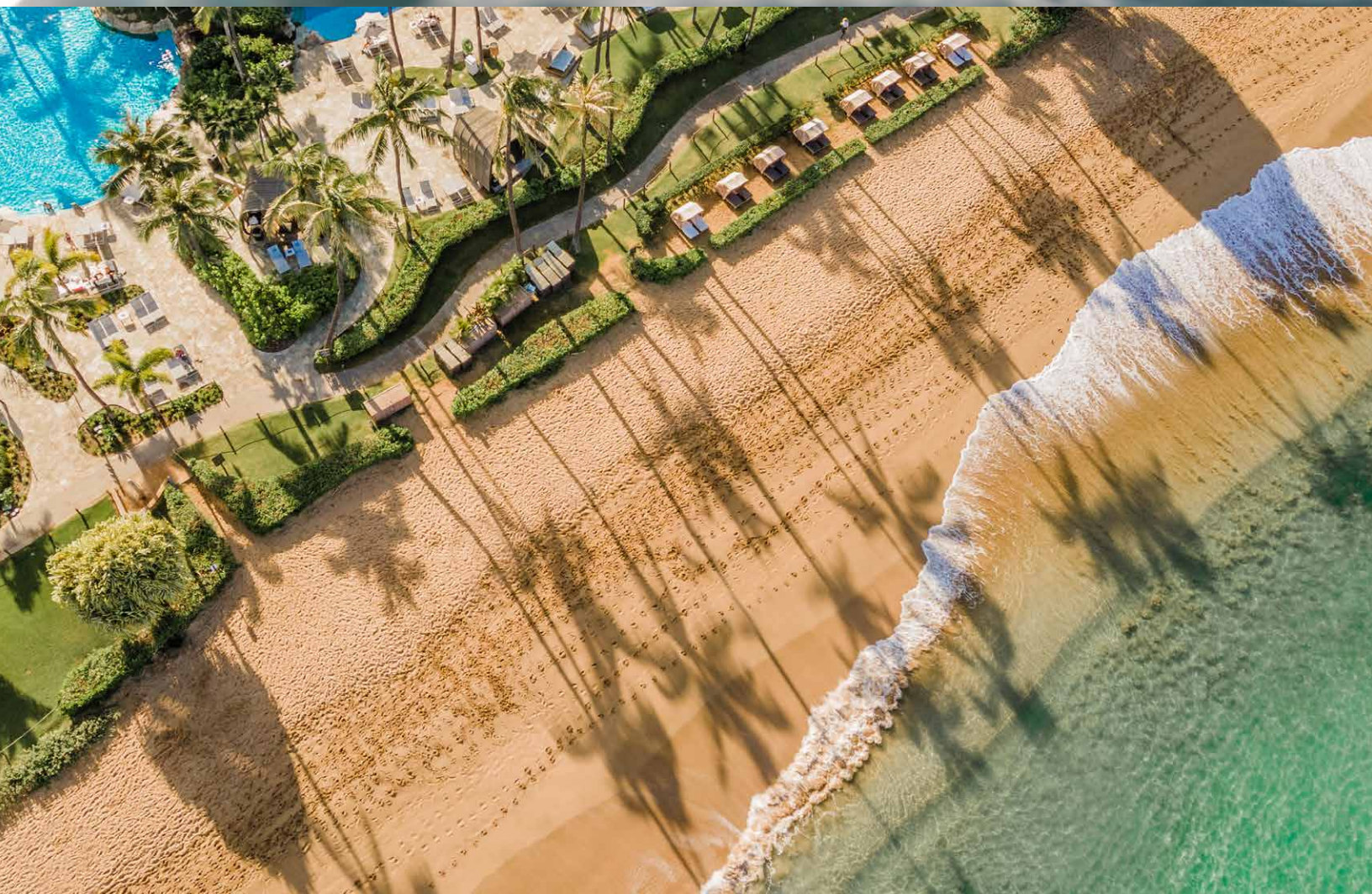
KĀ'ANAPALI SURF CLUB

Just steps away from the property, Kā'anapali Surf Club offers surfing and stand-up paddleboarding lessons that make for a great core workout. Options are available for private or group lessons.

CHASE THE SUNSET

When the sun sets, guests are invited to Chase The Sunset at Hale Mo'olelo, one of the resort's plentiful food and beverage venues. The end-of-day experience includes blowing of the pū (conch shell) at sunset, encouraging a quiet moment to observe the environment, reflect on the day and toast to well-being with a wellness elixir.





Playing Our Part in Replenishing Maui

The Westin Maui continues its powerful commitment to transform the property and services into a greener operation through sustainable and social responsibility practices as well as move towards a long-term goal of carbon reduction. The property team has continually been passionate in implementing sustainability efforts and were recognized in 2016 when The Westin Maui Resort & Spa took home the Excellence in Sustainability award at the 'Aipono Awards ceremony held in Maui.

The resort also adheres to green practices including efficient energy use, efficient water use, environmentally sensitive waste management and environmentally responsible purchasing.

Additional efforts include:

- Restaurant menus that support Hawai'i's farmers and also help to remove threatened seafood varieties as well as utilizing biodegradable takeout containers
- Sustainable landscaping practices include composting green waste and using reef-friendly fertilizers
- Replacing disposable plastic straws with paper straws
- Collaborating with Carbon Lighthouse to optimize on energy consumption, reduce electricity costs, and eliminate carbon emissions caused by wasted energy
- Eliminated plastic water bottles in guestrooms and replaced with refillable aluminum bottles with complimentary water fill stations at the resort
- Partnership with Raw Elements providing reef-safe sunscreen with complimentary dispensers throughout property
- Our Westin Maui WATERMAN program that allows guests to participate in thoughtfully designed ocean adventures while giving back to the local community through activities such as beach cleanups
- Complimentary shuttle service is provided for guests to neighboring properties to reduce use of vehicles
- Smart thermostats networked with motion and door sensors
- Variable frequency drives on all large motors
- Premium efficiency motors throughout resort
- Low flow plumbing fixtures
- LED's throughout resort and tinted sliding glass doors installed in Hōkūpa'a Tower guestrooms
- Energy efficient elevators
- Smart irrigation system with moisture/rain sensors
- Eliminated disposable cups at pool and replaced with reusable acrylic ware

MĀLAMA HAWAI'I

To encourage visitors to foster a deeper connection to Hawai'i, The Westin Maui offers guests the opportunity to volunteer with the Pacific Whale Foundation. Volunteers participate in beach cleanups to help maintain the beauty of Maui's beaches.

MĀLAMA HONOKŌWAI

Take a glimpse 500 years back into Maui's past in Honokōwai Valley. Volunteers have been working to remove invasive plant species to reveal an ancient Hawaiian village settlement, an initiative currently led by Duane Sparkman, the resort's Landscaping Manager. Open Saturdays, meet at the Pu'ukoli'i Train Station (West Maui) at 9AM and share a four-wheel drive ride deep into the lush valley.

MANANALU

Protecting the oceans and educating guests on the importance of it is a top priority for The Westin Maui. To reinforce our pledge to eliminate single-use plastics, we've partnered with Mananalua, a water company founded by Native Hawaiian actor and activist, Jason Mamoā, using recyclable aluminum cans as an in-room amenity to Bonvoy Members Platinum and above, Westin Heavenly Spa guests and the WestinWORKOUT® fitness studio.

CULTURAL OFFERINGS

We strive to bring authentic experiences to guests. Our resort offers various cultural experiences to offer guests to form a deeper connection and understanding of Hawaiian culture.



Island Raised, Culinary Expertise

EXECUTIVE CHEF CHRISTOPHER LEDERER

When he isn't leading the culinary transformation at Kā'anapali, Executive Chef Christopher Ikaika Lederer can be found in his backyard tending to a smoldering imu (underground oven) that fills the air with the distinctive aroma of kiawe wood, damp banana leaves and succulent pork. This hours-long labor of love inspires menu ideas and fuels Chef Lederer's passion for innovation. Born and raised on O'ahu, Chef Lederer developed an interest in cooking as a child. He learned to prepare meals at a young age, experimenting with family recipes and honing time-honored skills like smoking meats.

Chef Lederer's career has taken him to noted hotels in Waikiki, Lahaina, Chicago and as far away as Ireland. The pull of the islands has always been strong for Chef Lederer, whose broad experience combined with his love for authentic local flavors is reflected in his culinary vision for The Westin Maui's various eateries.

A local through and through, Chef Lederer is able to meld culture, history and his own experiences to create unique flavors that reflect the islands. For him, food is the pilina (connection) that brings us together, keeps our traditions alive, and allows us to share our heritage.

WAICOCO CHEF CHRIS KAJIOKA

Chris Kajioka, born and raised in Honolulu, began his classical culinary training at the prestigious Culinary Institute of America in Hyde Park, New York. He continued his career working at prominent restaurants across the country, including Ron Siegel's Dining Room at The Ritz-Carlton, Mourad Lahlou's Aziza in San Francisco, and Thomas Keller's iconic Per Se in New York.

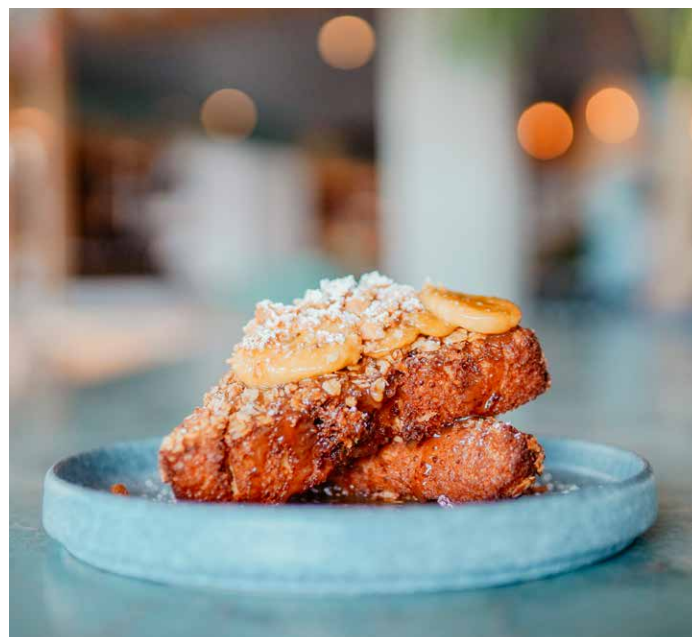
In 2012, Chef Kajioka returned to Hawai'i to become the Executive Chef of Vintage Cave. He received his first James Beard Foundation nomination for Rising Star Chef of the Year. In 2016, he partnered with Chef Anthony Rush to open his first restaurant, Senia. Within the first year of opening, Chef Kajioka garnered several James Beard nominations—2017 Best New Restaurant, 2018 Best Chef: West, and most recently 2020 Best Chef: Northwest & Pacific.



WAICOCO CHEF CHRIS KAJIOKA



EXECUTIVE CHEF CHRISTOPHER LEDERER





Fresh-Picked, Locally Sourced Flavors of Maui

The Westin Maui Resort & Spa has created unique gathering places where you'll find locals and visitors alike, to experience an authentic flavor of Maui. When you dine with us, we want you to feel like you are part of here, and part of our 'ohana.

WAICOCO BY CHEF CHRIS KAJIOKA

A spirited take on the Hawaiian words for water and coconut, waicoco pays homage to Maui's rich cultural diversity in a casual oceanfront setting. The 200-seat eatery features The Deck, a large open-air space with uninterrupted views of three Hawaiian Islands and the Pacific Ocean; the Dining Room, a modern and stylish indoor space; and Trades, a casual concept for poolside fare to-go.

HALE 'Ā

Meaning "house of glitter," Hale 'Ā is a sparkling and serene adults-only sanctuary with a sophisticated, spa-like atmosphere. Relaxation and elegance are your constant companions as you sip on simple cocktails crafted with a local twist and an artisanal food selection rooted in classic Hawai'i dishes elevated by the finest local ingredients.

HALE MO'OLELO

The open-air "house of talking story," a local term for casual socializing, invites you just as you are, salty and sandy after a day of catching waves or cruising on the beach, eager to sink your teeth into local grinds and hear a good yarn or two over an island inspired handcrafted cocktail - each with its own story to tell about the iconic people and landmarks of this legendary place.

MAHELE MARKET & EATERY

Meaning "divided but shared," Mahele is perfect for family-friendly meals. Featuring all the serendipity and small-town charm of Maui's mom 'n pop shops, with the freshest, locally sourced ingredients that make the island a foodie haven.



An Idyllic Gathering Place

Imagine your next meeting or special occasion under the warm Maui sun with superb amenities and relaxing activities. Generously spaced and detailed appointments throughout the resort set a rejuvenating tone and backdrop for your special event.

Surrounded by lush gardens with cascading waterfalls, The Westin Maui offers ways to rejuvenate and celebrate. Offering an abundance of events and meeting spaces, including two elegant ballrooms, executive boardroom space and multiple outdoor venues in an iconic oceanfront setting. Our meeting spaces include the latest AV equipment and teleconferencing services, along with sleek décor. Set amidst our tropical grounds among the golden sands of Kā'anapali, our rooms effortlessly elevate your meeting, corporate retreat, conference or banquet.

ALOHA PAVILION

The only venue on Kā'anapali Beach to offer an indoor-outdoor setting, the Aloha Pavilion continues to showcase magnificent events from dawn to dusk and under the stars. Home to the resort's spectacular Waialele Polynesian Lū'au, the expansive outdoor space features inspired ocean views, waterfalls, tall palms, torchlight and koi pond gardens. The Aloha Pavilion is also sheltered for groups to enjoy Maui's amazing outdoors, rain or shine.

OCEAN LAWN

Located beachside of the resort, the beautifully landscaped Ocean Lawn presents unrivaled views of the shimmering warm Pacific and neighboring islands of Lāna'i and Moloka'i. At sunrise and sunset, this location is magnificent for a morning breakfast, evening reception or delightful themed dinner.

MEETINGS & EVENTS HIGHLIGHTS

- 20 event rooms
- 56,340 sq. ft. total event space
- 1,100 capacity largest space
- 11 maximum breakout rooms





Key Events & Island Activities

THE ANNUAL HUMPBACK WHALE MIGRATION & GREAT WHALE COUNT

While all year round, you can swim in the pristine waters off Kā'anapali Beach alongside green sea turtles and tropical fish, from mid-December to mid-April, families of humpback whales share the waters on their seasonal migration from Alaska to Hawai'i. Admire this beautiful natural phenomenon from the shores fronting our resort or out on our outrigger canoes, where you experience stunning views of the West Maui Mountains and neighboring Lāna'i and Moloka'i. Guests can even join the annual Great Whale Count, led by the Pacific Whale Foundation to monitor and document the many sightings they see. Visit oceancount.org for more information.

HALEAKALĀ NATIONAL PARK

At 10,023 ft. above sea level, Haleakalā sets the scene for an incredible view of both land and skyscape. Meaning "house of the sun" in Hawaiian, the legend for Haleakalā goes that the demigod Maui lassoed the sun from its journey across the sky as he stood on the volcano's summit, slowing its descent to make the day last longer. With numerous hiking trails, the main attraction is the legendary sunrise from the summit of Haleakalā but there are multiple ways to enjoy Maui's most prominent volcano.

ĪAO VALLEY STATE PARK

Nestled between the steep emerald ridges of the valley, Īao Valley State Park is a must-see while visiting the island of Maui. Located in Central Maui, west of Wailuku, this peaceful 4,000-acre, 10-mile long park is site to the 1,200-foot Īao Needle, one of Maui's most recognizable landmarks. This iconic rock outcropping overlooks Īao Stream and is an ideal attraction for easy hiking and sightseeing.

MAUI MARATHON

The Maui Marathon is the longest consecutively held running event in the state of Hawai'i. The full marathon starts in Kahului and ends in Kā'anapali with scenic views along most of the course. The half marathon, 10K and 5K starts and ends in Kā'anapali with beautiful ocean views along the way.

LAHAINA TOWN

Once known as Lele, (restless sun) Lahaina is a historic town that has now become a Maui hotspot with dozens of art galleries and a variety of unique shops and restaurants. Once the capital of the Hawaiian Kingdom, Lahaina was also a historic whaling village during the whaling boom of the mid-1800s. Today, Lahaina is on the National Register of Historic Places. Visit historic stops like the U.S. Seamen's Hospital, Hale Pa'ahao (Lahaina Prison), the Pioneer Inn, Maui's oldest living banyan tree and other sites on the Lahaina Historic Trail.

HONOLUA BAY

Honolua Bay on Maui's northwest shore is a favorite spot for experienced surfers. During the winter high surf season, Honolua has been known to have a hollow, powerful wave that offers incredibly long rides. The bluffs above the bay offer a great vantage point for visitors to watch the pros from a safe distance. During the calmer summer months, Honolua Bay is a popular destination for snorkeling and scuba diving. As part of the Mokulē'ia Marine Life Conservation District, the bay has an abundance of fish and coral formations to explore.

WHALERS VILLAGE

Whalers Village is a shopping and entertainment center located in the heart of Kā'anapali. The open-air mall hosts over 80 stores and both full-service and fast casual dining options also being the home to the Whalers Village Museum, a tribute to Lahaina's history of whaling in the 1800s.